

MODEL 211

Operation no. of operation texts or standard texts and flat rates

Category	Op. no.	Operation text	Time	Acc. no.	Code
P	023982	Check connection of circuit 30 in footwell	019 WU	---	---

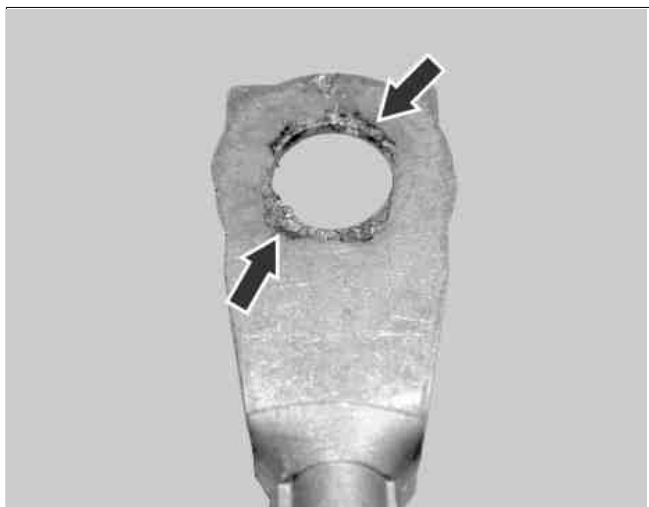
Damage code	Cause	Remedy	
	i All of the causes listed that could lead to contact problems must be checked!	1 Separate ground line from battery.	
		2 Remove footwell paneling in passenger footwell.	
54 290 38	The starter wiring harness lug is not properly connected to the prefuse box.	3 Disconnect starter wiring harness on the vehicle under side from the prefuse box (F32).	
	i The starter wiring harness lug cannot be properly connected to the terminal point on the front prefuse box (F32) (outer part of passenger footwell). This can cause pitting of the contacts (see figure 1 and 2).	4 Perform a visual inspection of the contact surfaces of the starter wiring harness and of the prefuse box, clean contacts and coat with a preserving agent. i If there is damage (burnt) to the cap of the starter wiring harness, use a new cap.	
	i Damping mat is between the body and the cap when connection is bolted together. For this reason, flat contact between the cap and the terminal point cannot be ensured. A tilted installation position can lead to contact problems. i Battery cable (connection in interior of prefuse box) is under tension. If the cable is under tension, it can bend and/or misalign the terminal point in the interior of the prefuse box. A tilted installation position can also lead to contact problems in this case. See figure 4 for the installation position of the battery cable.	5 Connect starter wiring harness to the prefuse box Nm i When doing this, ensure that: - that the damping mat is not caught between the body and the cap (see figure 3). - that the battery cable is not under tension.	*BA54.10-P-1009-01C

Nm Battery

Number	Designation	Model 211		
BA54.10-P-1009-01C	Nut for line connection on front prefuse socket	M6	Nm	7
		M8	Nm	14

Figure 1

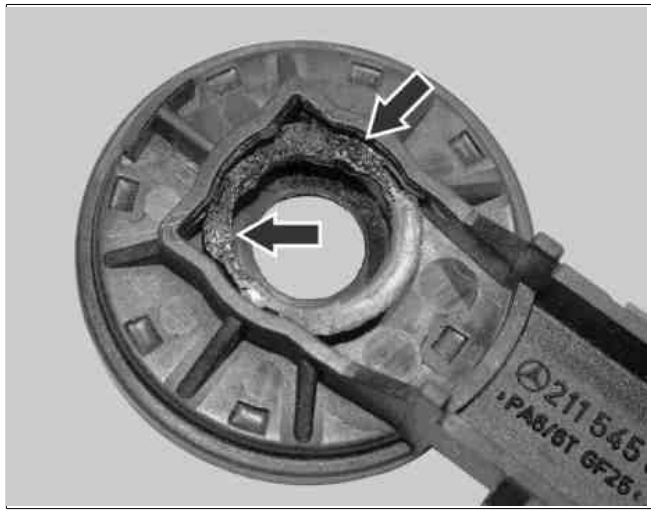
Arrows Burning on starter wiring harness terminal



P54.18-3464-11

Figure 2

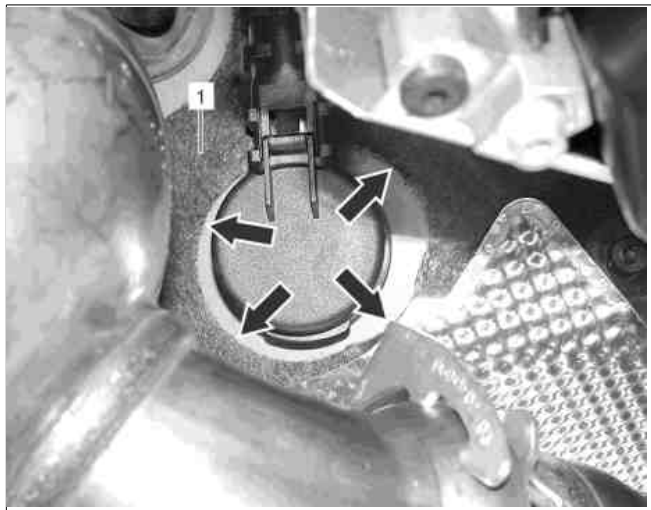
Arrows Burning on bottom section of front prefuse socket arresting cover (F32)



P54.15-2544-11

Figure 3

1 Insulation mat



P54.15-2545-11

Figure 4

2 Battery cable at front prefuse box (F32) in passenger footwell



P54.15-2543-11

Parts ordering notes

Part no.	Designation	Quantity
A 211 545 04 83	Cap	As required
A 211 545 11 83	Cap	As required